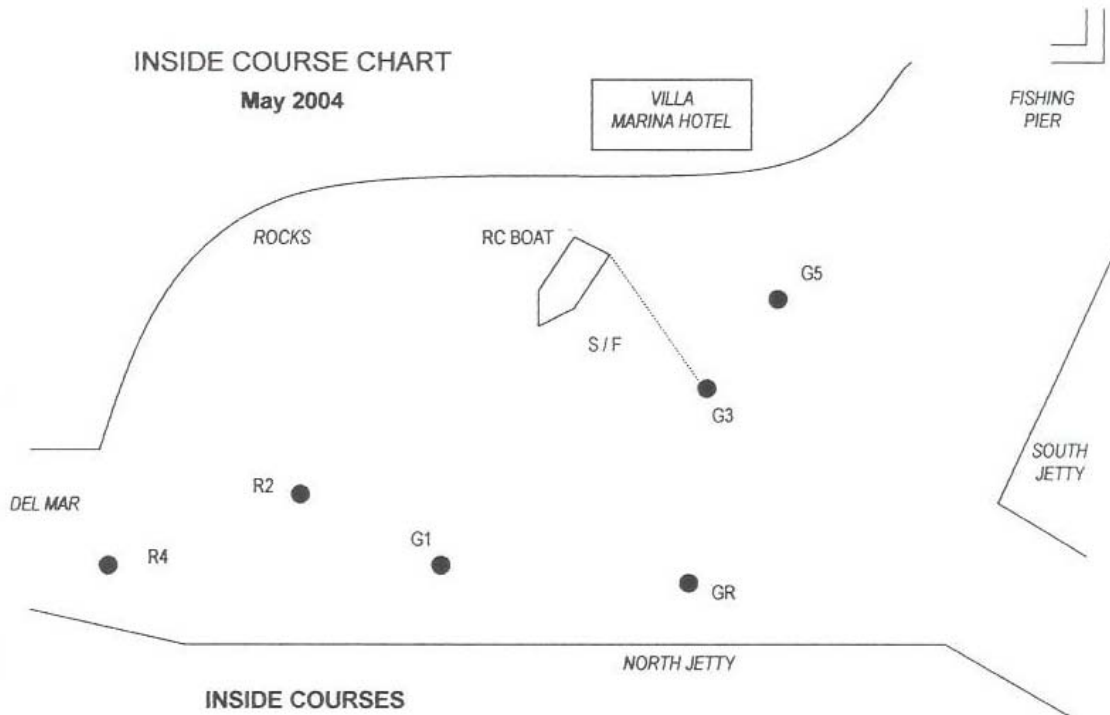


INSIDE COURSE CHART

May 2004



INSIDE COURSES

- Course 1..... S - R4 - G1 - G5 - R2 - G5 - F
- Course 2..... S - R4 - GR - G5 - F
- Course 3..... S - R4 - GR - G5 - R2 - F
- Course 4..... S - R4 - G1 - GR - R2s - G5 - F
- Course 5..... S - R4 - G5 - R4 - GR - G5 - F
- Course 6..... S - R2 - G5 - F
- Course 7..... S - R2 - G5 - G1 - F
- Course 8..... S - R4 - G1 - GR - G5 - R4 - G5 - R2 - F
- Course 9..... S - G1 - G5 - GR - G5 - F
- Course 10..... S - G1 - G5 - R2 - G1 - G5 - GR - G5 - F
- Course 11..... S - GR - G5 - GRs - R2 - G1 - G5 - F
- Course 12..... S - GR - G5 - F

All R marks (R2 & R4) are red channel buoys, all G marks (G1, 3, 5) are green channel buoys, and GR is a red and green channel buoy.

Round all marks to Port unless there is an "s" after the name, in which case it is rounded to starboard.

Only go through the start/finish line when starting or finishing a lap or starting a second lap.

FLAGS To KNOW

Red & White vertical stripe = race postponed but will start shortly

White with Blue Cross = individual recall with one or more boats over at the start

White with Blue Square = shorten course